

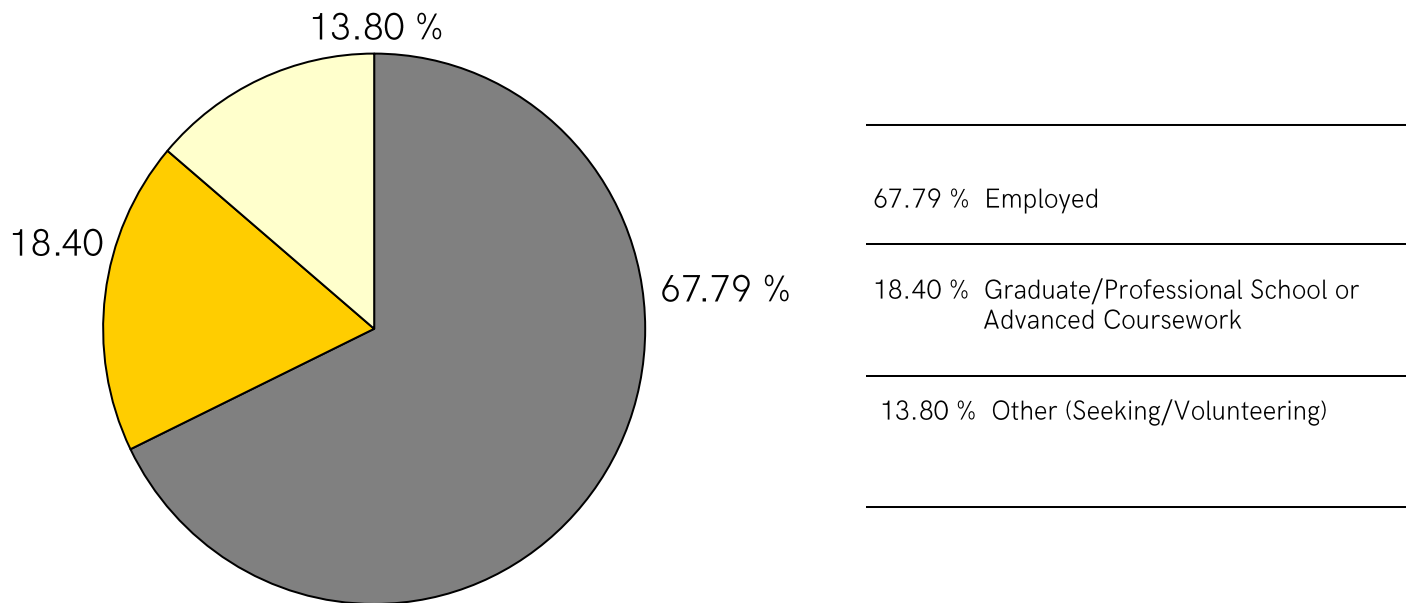
# Post-Graduate Survey Class of 2019 Highlights

## ABOUT THE SURVEY

The Class of 2019 Post-Graduate Survey, conducted by the Southwestern University Center for Career & Professional Development (CCPD), was completed in March 2020. Graduating senior data was collected beginning in April 2019 via email, in person at Commencement in May, and with follow-up emails and phone calls into March 2020. Of the 332 graduates from December 2018, May 2019 and August 2019 who make up this reporting class, the CCPD obtained information on 326 (98 percent of the class).

If you would like more information, please contact the CCPD at [pirate2pro@southwestern.edu](mailto:pirate2pro@southwestern.edu) or 512.863.1346.

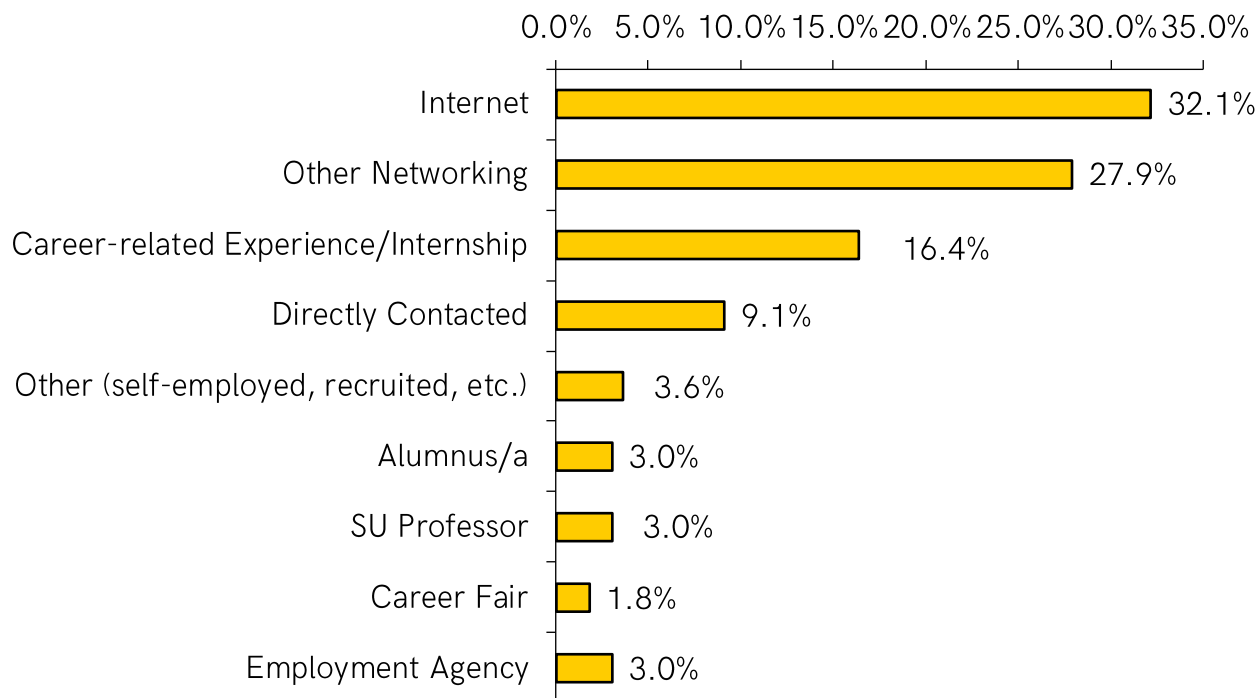
## WHERE IS THE CLASS OF 2019 NOW?



## EMPLOYMENT

More than two-thirds of all survey respondents reported entering the world of work upon graduation.

How did they locate positions?



### Where are they working?

The majority (83 percent) of respondents work in Texas, while 15 percent work in 13 other states and three percent work internationally in six countries (Bahamas, China, Germany, Scotland (UK), Singapore, and Spain).

The most frequently represented work locations are:

- 83.0 % Texas
- 2.6 % New York
- 2.1 % Colorado
- 2.1 % Washington, DC
- 1.6 % Illinois

### What do they earn?

Respondents working full-time who reported annual salaries earn:

- 25.4 % less than \$30,000
- 57.7 % \$30,000 to \$50,000
- 16.9 % more than \$50,000

# EMPLOYMENT

## Selected employing organizations and positions of the Class of 2019

Apple Inc., <i>GIS Analyst</i>	Insight Global, <i>Recruiter</i>
Archetype Entertainment, <i>Assistant Producer</i>	Insys Therapeutics, <i>Research and Development Chemist</i>
Arrive Logistics, <i>Staff Accountant</i>	Khoros, LLC, <i>Social Media Coordinator</i>
Aspen Insurance, <i>Underwriting Assistant</i>	Kohm & Associates, P.C., <i>Legal Assistant</i>
Aspiriant, LLC, <i>Associate, Investment Operations</i>	KPMG, <i>Human Resources Representative</i>
Baylor Scott & White Health, <i>Research Enrollment Analyst</i>	KSM South, <i>Planning Associate</i>
Bryan ISD, <i>3rd Grade ELAR/Social Studies Teacher</i>	Lockheed Martin Corporation, <i>Project Integrator - Engineering</i>
Center for Autism and Related Disorders, <i>Registered Behavior Technician</i>	Marcus & Millichap, Inc., <i>Real Estate Agent</i>
Cintas Corporation, <i>Service Sales Representative</i>	Masterson Advisors LLC, <i>Analyst</i>
City of Austin Police Department, <i>Cadet</i>	Midway ISD, <i>Orchestra Director</i>
Cloudflare, Inc., <i>Business Development Representative</i>	Miller Ad Agency, <i>Account Executive</i>
Congressional Research Service, <i>Legislative Research Assistant</i>	Northern Trust Corporation, <i>Investment Analyst</i>
Compliance Resources, Inc., <i>Environmental Field Inspector</i>	Orthopedic Associates of Central Texas, <i>Medical Scribe</i>
Dairy.com, <i>Junior UI Developer</i>	Pacific Life Insurance Company, <i>Sales Associate</i>
David Weekley Homes, <i>Superintendent/Builder</i>	Penguin Random House LLC, <i>Editorial Assistant</i>
Dawson Financial Services, <i>Director of Operations</i>	Queensbury Theater, <i>Technical Director</i>
Dell EMC, <i>Marketing Analyst</i>	Raise Your Hand Texas, <i>Digital Marketing Coordinator</i>
Dell Technologies Inc., <i>Inside Sales Representative</i>	Ryan, LLC, <i>Consultant, Property Tax Complex</i>
Dimensional Fund Advisors L.P., <i>Investment Operations Associate</i>	SHI International Corp., <i>Inside Sales Account Executive</i>
Federal Reserve Bank of Dallas, <i>Research Assistant</i>	Sports Field Solutions, <i>Assistant Accountant</i>
Firehouse Animal Health Center, <i>Veterinary Technician</i>	StoryFit, <i>Marketing Associate</i>
Fragomen, <i>Assistant Paralegal</i>	Superior Sports Investments, <i>Growth Marketer</i>
Georgetown ISD, <i>Bilingual Teacher</i>	Teach For America, <i>Science Teacher</i>
GoDaddy Inc., <i>Creative Specialist (Content)</i>	Texas Health & Human Services Commission, <i>IT Generalist</i>
Granger ISD, <i>Special Education Teacher</i>	The Georgetown Palace Theatre, <i>Costume Designer</i>
Houston Texans, <i>Marketing &amp; Promotions Team</i>	The Hertz Corporation, <i>Management Trainee</i>
IDEA Mission, <i>Teaching Resident</i>	United States Marine Corps, <i>2nd Lieutenant</i>
	UT Southwestern Medical Center, <i>Laboratory Technician</i>
	Voto Latino, <i>Partnerships Associate</i>

A liberal education prepares students broadly for many kinds of jobs. In general, majors do not correlate directly with specific job titles. Instead, graduates evaluated their satisfaction with their outcomes, and how well their outcomes match their expectations and meet their interests. Those who reported on these questions stated:

### What type of employment is it?

- 3.6 % Post-graduate internship or fellowship
- 3.6 % Freelancer/Entrepreneur
- 5.4 % Temporary/contract work assignment
- 1.2 % Military service
- 86.3 % All other employment

### How satisfied are they with their outcome?

- 41.6 % Very happy
- 38.1 % Satisfied
- 18.8 % Slightly unsatisfied
- 1.5 % Completely unsatisfied

### Is the work in their field of interest?

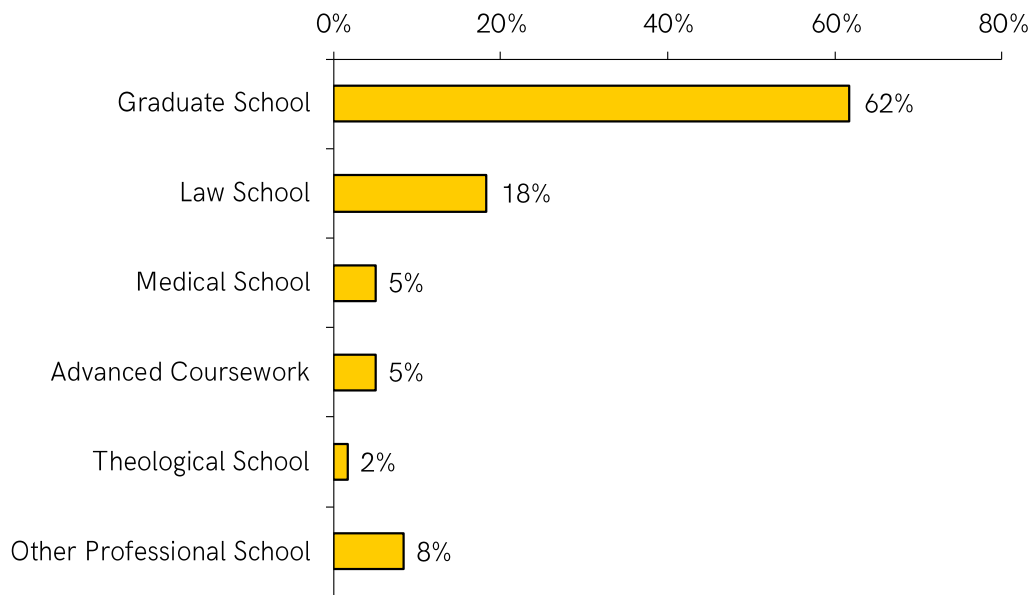
- 58.0 % Completely
- 33.7 % Somewhat
- 8.3 % Not at all

### How well does the outcome match their expectations?

- 40.0 % Meets expectations
- 29.5 % Close to meeting expectations
- 27.0 % Does not match but is happy
- 3.5 % Does not match and is unhappy

## CONTINUING EDUCATION

More than 18 percent of the Class of 2019 continued their education directly after graduation from Southwestern in graduate and professional programs or through advanced coursework such as prerequisite coursework for graduate study, additional coursework toward CPA certification, pre-health pre-requisites or other programs. Of those continuing their studies, they did so in the following ways:



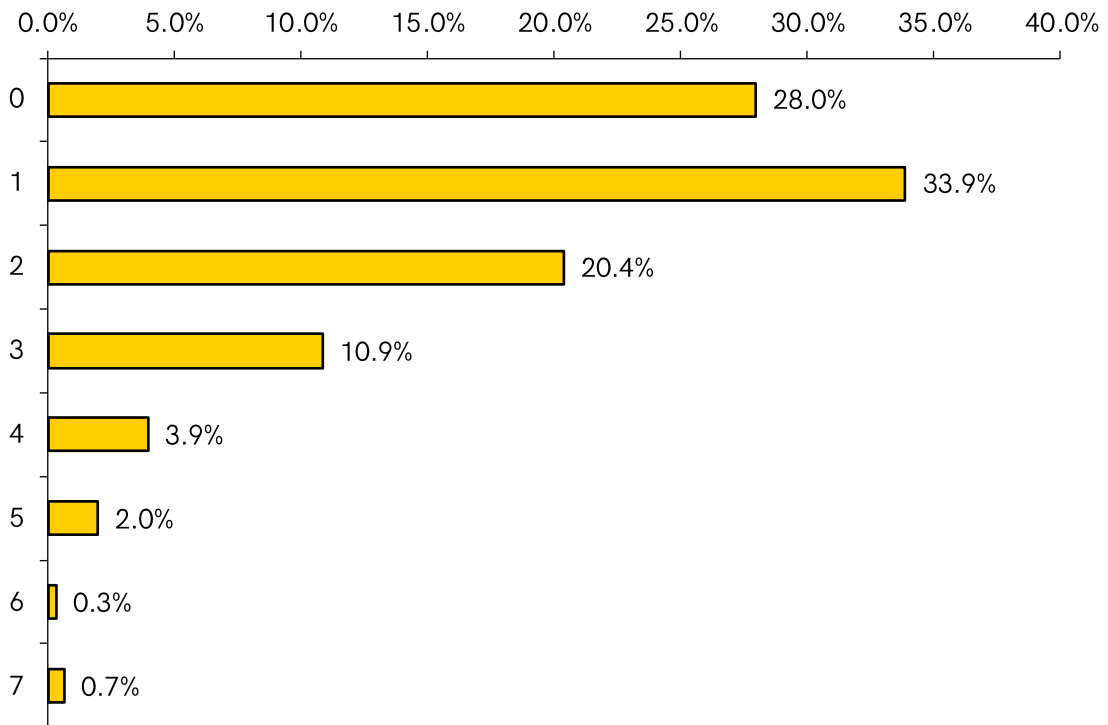
### Selected institutions / programs of study

Cornell University, *Master of Industrial and Labor Relations (MILR)*  
Emory University School of Law, *JD*  
George Washington University, *MS in Healthcare Administration*  
New York University, *MM in Music Performance (Percussion Studies)*  
North Carolina State University, *PhD in Materials Science and Engineering*  
Northeastern University School of Law, *JD*  
Northern Arizona University, *MA in Human Relations*  
Southern Methodist University, *PhD in Computational and Applied Mathematics*  
Southern Methodist University Perkins School of Theology, *MDiv in Theology*  
Stanford University, *PhD in Computer Science*  
Texas A&M University, *MA in International Affairs (National Security & Diplomacy)*  
Texas A&M University College of Veterinary Medicine, *DVM*  
Texas State University, *MS in Clinical Mental Health Counseling*  
University of Arizona, *MA in French*  
University of Indiana Bloomington, *PhD in Sociology*  
University of Texas at Austin, *PhD in Paleontology*  
University of Texas at Austin, *MPAff in International Affairs*  
University of Texas Medical Branch, *MD*  
University of the West of England, Bristol, *MSc in Sport and Exercise Psychology*  
UTHealth Houston, *MPH*  
UTHealth Houston School of Dentistry, *DDS*  
UTHealth San Antonio, *Doctor of Occupational Therapy (OTD)*  
Vanderbilt University, *MEd in Learning and Design*  
Vermont Law School, *JD/Master of Environmental Law and Policy*  
Washington University, *DPT*

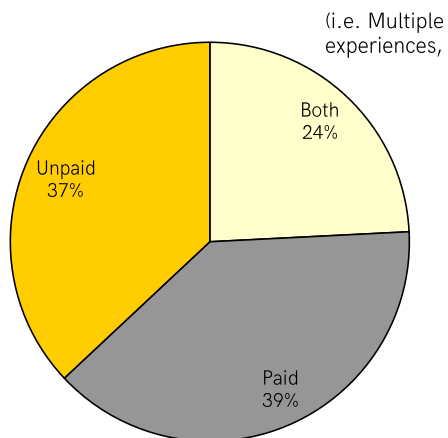
# INTERNSHIPS

More than 70 percent of the Class of 2019 reported completing at least one internship experience. Thirty-eight percent of the reported completing two or more internships.

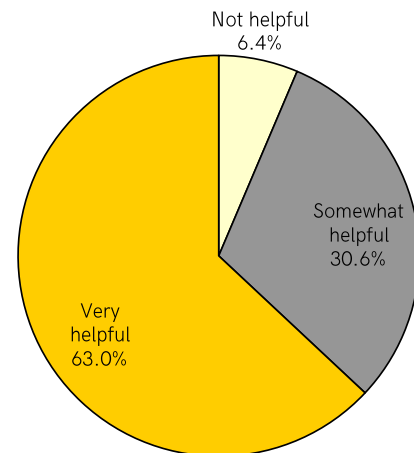
## Total number of internships



## Pay for internships



## Helpfulness of internships





## EVALUATION

In addition to evaluating satisfaction with first-destination outcomes and the match between those outcomes and their expectations, graduates also reported on their satisfaction with CCPD interactions as well as overall satisfaction with their Southwestern University education.

### Satisfaction with the Center for Career & Professional Development

Graduates reported their responses to the question, "How satisfied were you with the CCPD regarding career-development guidance provided for securing your job/grad school acceptance?" Interactions with the CCPD can include individual advising appointments, participation in group workshops/events, utilizing the resource library, etc. More detailed evaluations of each of these components are available through the CCPD. Of students who reported using the CCPD, respondents were:

- 47 % Very happy
- 38 % Satisfied
- 13 % Slightly unsatisfied
- 3 % Completely unsatisfied

### Satisfaction with Southwestern

Graduates reported their responses to the question, "Based on your SU experience, how satisfied are you with your preparation for your [intended] job/graduate school program?" Of students who answered this question, respondents were:

- 45 % Very happy
  - 45 % Satisfied
  - 9 % Slightly unsatisfied
  - 2 % Completely unsatisfied
- 