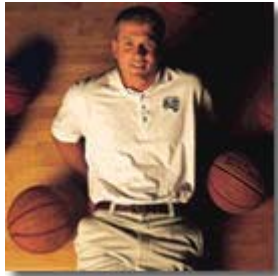
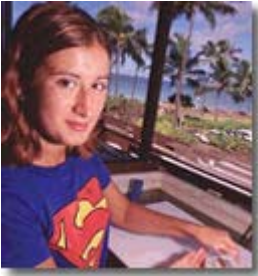


College vs. The World of Work



College

World of Work

Frequent, quick and concrete feedback (grades, etc.)

Infrequent and less precise feedback

Highly structured curriculum and programs with lots of direction

Highly unstructured environment and tasks with few directions

Few significant changes

Frequent and unexpected changes

Flexible schedule

Structured schedule

Frequent breaks and time off

Limited time off

Personal control over time, classes and interests

Directions and interests dictated by others

Intellectual challenge

Organizational and people challenges

Choose your performance level (e.g. A, B, C)

A-level work required all the time

Focus on your growth and development

Focus on getting results for the organization

Create and explore knowledge

Get results with your knowledge

Individual effort

Team effort

"Right" answers

Few "right" answers

Independence of ideas and thinking

Do it the company's way

Professors

Bosses

Less initiative required

Lots of initiative required