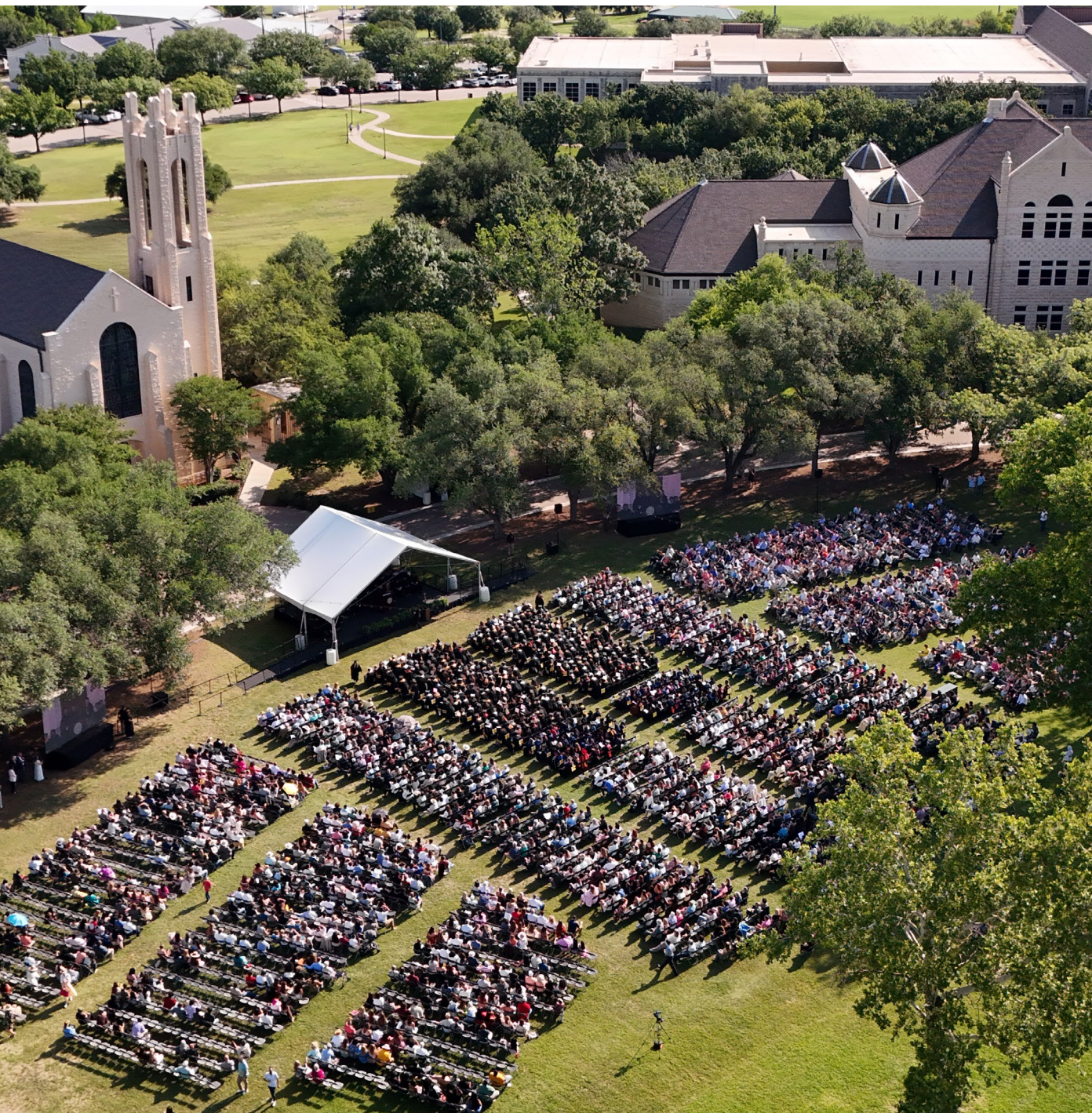


SOUTHWESTERN UNIVERSITY



2025-26 Report of Excellence



**Among
the finest
liberal arts
schools in
the nation.
In the best
location in
the nation.**

For nearly two centuries, Southwestern has blended the arts, sciences, languages, and humanities, inspiring students to create unique pathways to life passions and fulfilling careers. As Texas's first institution of higher education and one of the nation's top-ranked liberal arts colleges, Southwestern empowers our students to connect different fields of knowledge and innovate solutions to complex problems. They engage in dynamic classroom discussions, real-world learning experiences, and cocurricular activities that empower them to think creatively and critically, communicate and collaborate effectively, and ultimately have the impact they want to have on the world.

We welcome our new students to Georgetown, Texas, one of the fastest-growing cities in America, surrounded by companies like Apple, Google, Samsung, Dell, and Tesla, making Southwestern a vital component in a dynamic marketplace that is redefining the liberal arts for the 21st century.

#1

Located in Georgetown, Texas, one of the nation's fastest-growing and most desirable cities, year after year
(U.S. Census Bureau)

#1

Metropolitan Area (Austin) in the Nation to Launch a Career
(Bankrate)

#1

Location in the U.S. for Quality of Life
(Bankrate)



1st institution of higher learning
in Texas and the Southwest



#1 Hispanic-Serving Institution on the Top 100 Liberal Arts
Institutions List (*U.S. News & World Report*)

in Texas and **#2** in the nation for Career Services
(*The Princeton Review*)

in Texas for Economic Diversity (*The New York Times*)

in Texas and **#50** in the nation for Top 50 Green Colleges
(*The Princeton Review*)

Located in Georgetown, Texas, one of the nation's fastest-growing
and most desirable cities, year after year
(*U.S. Census Bureau*)

Metropolitan Area (Austin) in the Nation to Launch a Career (*Bankrate*)

Location in the U.S. for Quality of Life (*Bankrate*)

1st Liberal Arts University in Texas to Sign the Taillores Declaration
for Environmental Sustainability in Higher Education (2007)

STUDENT BODY:

1441

FULL-TIME FACULTY:

120

STUDENT-TO-FACULTY
RATIO:

11:1

TOTAL GRADUATES IN
THE CLASS OF 2025:

313

TOP 5 MAJORS

+ Business

+ Psychology

+ Biology

+ Kinesiology

+ Communication Studies





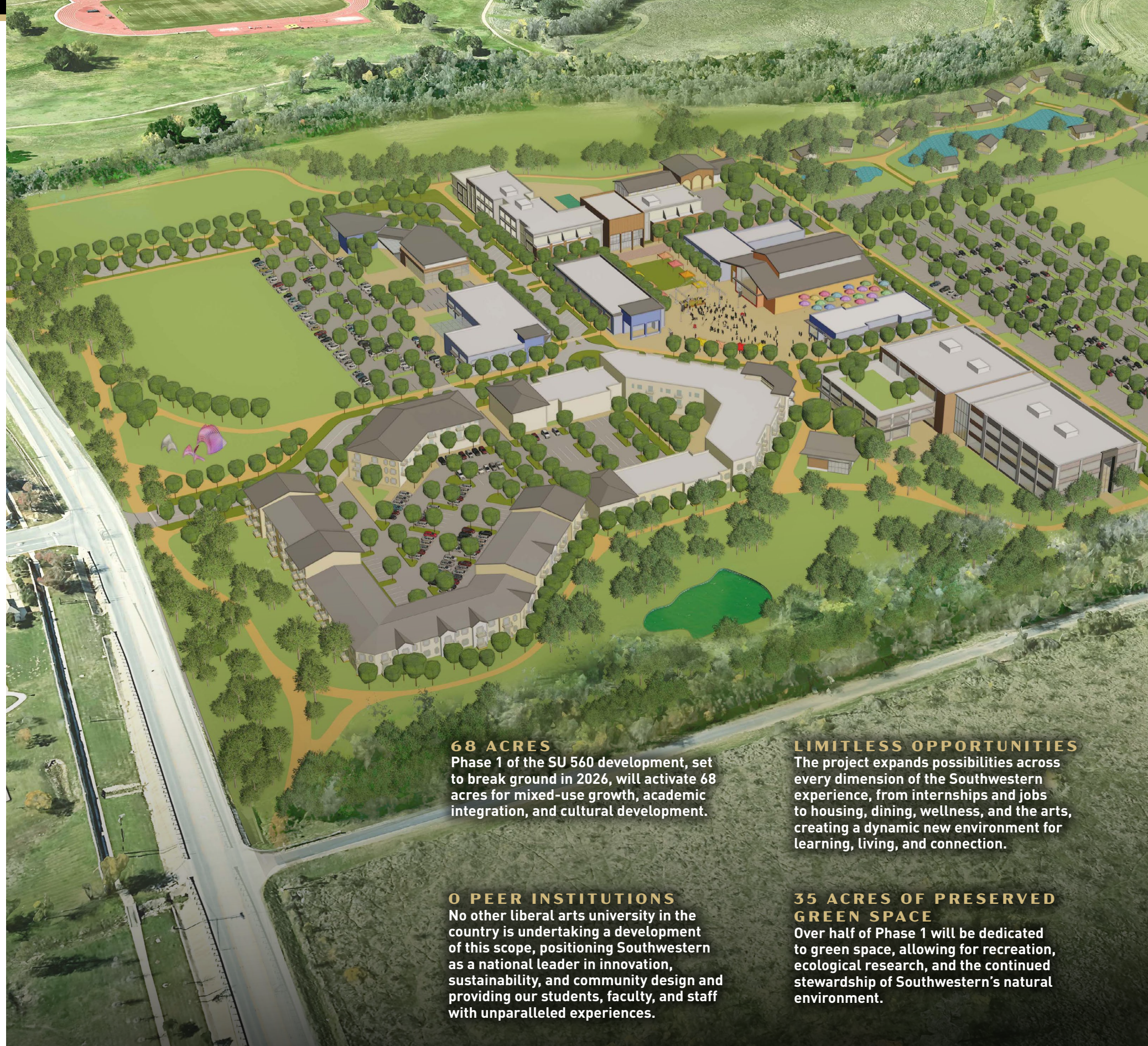
**SOUTHWESTERN
UNIVERSITY 560**

A Bold Vision for Education, Innovation, and Community Impact

Southwestern University is advancing one of the most ambitious liberal arts development projects in the nation. The University is overseeing the long-term planning and implementation of a 560-acre tract of land adjacent to campus, creating a distinct, mixed-use academic and cultural district that aligns with Southwestern's values and broadens its influence for generations to come.

This transformative endeavor is rooted in the University's mission to engage the whole student while also contributing meaningfully to the future of Central Texas. The development will combine educational spaces, arts venues, civic infrastructure, and sustainable design with thoughtfully planned residential, commercial, and green spaces—all in service of learning, connection, and creativity.

Learn more about this transformative development at southwestern560.com.



68 ACRES

Phase 1 of the SU 560 development, set to break ground in 2026, will activate 68 acres for mixed-use growth, academic integration, and cultural development.

LIMITLESS OPPORTUNITIES

The project expands possibilities across every dimension of the Southwestern experience, from internships and jobs to housing, dining, wellness, and the arts, creating a dynamic new environment for learning, living, and connection.

0 PEER INSTITUTIONS

No other liberal arts university in the country is undertaking a development of this scope, positioning Southwestern as a national leader in innovation, sustainability, and community design and providing our students, faculty, and staff with unparalleled experiences.

35 ACRES OF PRESERVED GREEN SPACE

Over half of Phase 1 will be dedicated to green space, allowing for recreation, ecological research, and the continued stewardship of Southwestern's natural environment.

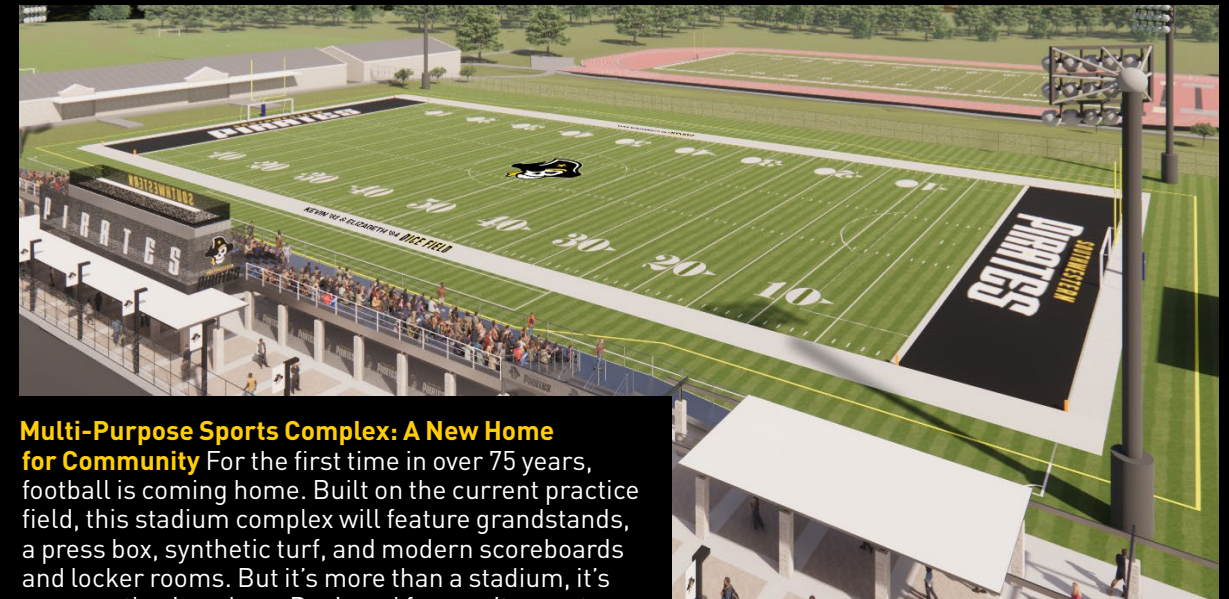
Where Old is New Again

\$120M in building projects

At Southwestern, we believe excellence honors the past while boldly shaping the future. Today, our campus is undergoing one of the most significant physical transformations in its 186-year history. These capital projects aren't just about buildings, they're about creating vibrant, sustainable spaces that foster learning, creativity, and connection for generations to come.



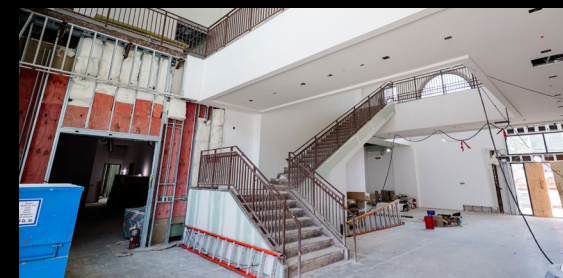
Mood-Bridwell Hall: A Historic Transformation Listed on the National Register of Historic Places, Mood-Bridwell Hall has been reimagined to meet the needs of today's students while preserving its 1908 charm. Now equipped with 21st-century technology, the revitalized building features electronic classrooms, performance and gathering spaces, a coffeehouse, and a restored upper terrace that invites outdoor learning and community events.



Multi-Purpose Sports Complex: A New Home for Community For the first time in over 75 years, football is coming home. Built on the current practice field, this stadium complex will feature grandstands, a press box, synthetic turf, and modern scoreboards and locker rooms. But it's more than a stadium, it's a new gathering place. Designed for varsity sports, club and intramural teams, and major campus events like Commencement, the complex will be a vibrant center for Pirate pride and community connection.



Welcome Center: First Impressions with Impact Set to become a focal point for prospective students and visitors, the new Welcome Center will house our Admission and Financial Aid offices alongside an art gallery and film theater. Located adjacent to the first-year residence hall, it will offer a dynamic, inviting gateway into the Southwestern experience.



Mixed-Use Residence Halls: Where Students Live and Thrive Opening in 2026, our new residence halls are designed with intention. Built to LEED Gold standards, they will include quiet study spaces, indoor and outdoor lounges, a fitness room, and a Pilates studio, all tailored to support student wellness, collaboration, and success.





Student Scholars

Southwestern students earn national recognition for their academic excellence, receiving some of the country's most prestigious honors and awards.

73 Sumners Scholars **23** Fulbright Scholars
44 Gilman Scholars **18** Kemper Scholars

The Phi Beta Kappa Society is the nation's oldest honorary society, with chapters at 293 of the foremost institutions of higher education across the country.

PHI BETA KAPPA

Student Initiates: **824**
 Faculty, Staff, and Trustee Members: **29**
 Honorary & Alumni Members: **18**
 Chapters in Texas: **1 of 12**



2025 Phi Beta Kappa Inductees

HISTORICAL HIGHLIGHTS: Three of the first five Rhodes Scholars in Texas graduated from Southwestern.

Southwestern University is the birthplace of the National Honor Society Alpha Chi.

NOTABLE STUDENT ACCOMPLISHMENTS

Adrian Gonzalez '25 was one of just 14 students in the country selected for the prestigious Ralph Bunche Summer Institute, an intensive five-week program that prepares aspiring political scientists for doctoral study.



Sierra Rupp '23 was awarded a Fulbright English Teaching Assistantship in Spain for Fall 2024, one of the most competitive international scholarship programs. Her Senior Seminar paper, "From Fields to Frontlines: The Relationship Between Drug Trafficking & Armed Conflict," was also published in The Pi Sigma Alpha Undergraduate Journal of Politics.



Samuel Hoffman '27 and **Ethan Wilcox '26** were each awarded the prestigious 2025 Sumners Scholarship—\$40,000 scholarships that support students dedicated to civic engagement and leadership. The honor adds to Southwestern's longstanding legacy of Sumners Scholars recipients.



Prepared for What's Next

#2
Career Center
in the Nation

SU students work with faculty researchers on projects ranging from the **3D printing of human organs** to building rockets to cancer research.

Students in Southwestern's Financial Analyst Program are responsible for managing over **\$1 million** of the University's endowment.

97%
of students are employed or in graduate school within 10 months of graduation.

89%
of students graduate in four years, well above the national average.

According to the **Fiske Guide to Colleges**, students of the Sarofim School of Fine Arts are notable for producing graduate-level creative work.

GRADUATE & PROFESSIONAL SCHOOLS ATTENDED BY SU ALUMNI

Law Schools

- + Duke University
- + Emory University
- + Northeastern University
- + University of Southern California
- + University of Texas

Medical Schools

- + University of Pennsylvania
- + University of Texas Health Science Center
- + University of Texas Medical Branch
- + University of Texas Southwestern Medical Center
- + Washington University

Graduate Schools

- + Harvard University
- + University of Pennsylvania
- + Dartmouth College
- + Rice University
- + University of California, Berkeley
- + University of Chicago





5 Graduate Pathways. 3 Certificates. Countless Possibilities.

GRADUATE & PROFESSIONAL SCHOOL PATHWAYS

Southwestern University provides multiple pathways to graduate and professional degrees through partnerships with leading institutions. These programs combine the breadth and rigor of a Southwestern liberal arts education with a seamless transition into advanced study, often allowing students to earn two degrees in less time and at a lower cost.

CERTIFICATE PROGRAMS

Southwestern also offers specialized certificate programs that combine coursework with hands-on experiences. These credentials enhance students' resumes and graduate school applications.

CURRENT CERTIFICATES

- Computer-Aided Design (CAD) & 3D Printing
- Legal Studies
- Spanish for Healthcare Professions

Graduate partnerships and certificate programs are continuing to expand.



RICE UNIVERSITY Master of Accounting (MAcc)

An early admission pathway with no application fee. Open to all majors, this program includes access to Big Four internships with Deloitte, EY, KPMG, and PwC.



TEXAS A&M UNIVERSITY MAYS BUSINESS SCHOOL Master's Programs in Business

Options include degrees in analytics, finance, marketing, human resource management, real estate, and an MBA. An MS in Business is also available specifically for non-business majors.



TEXAS TECH UNIVERSITY

Master of Mechanical Engineering

An accelerated path combining an undergraduate degree from Southwestern with a graduate degree from Texas Tech.



WASHINGTON UNIVERSITY IN ST. LOUIS

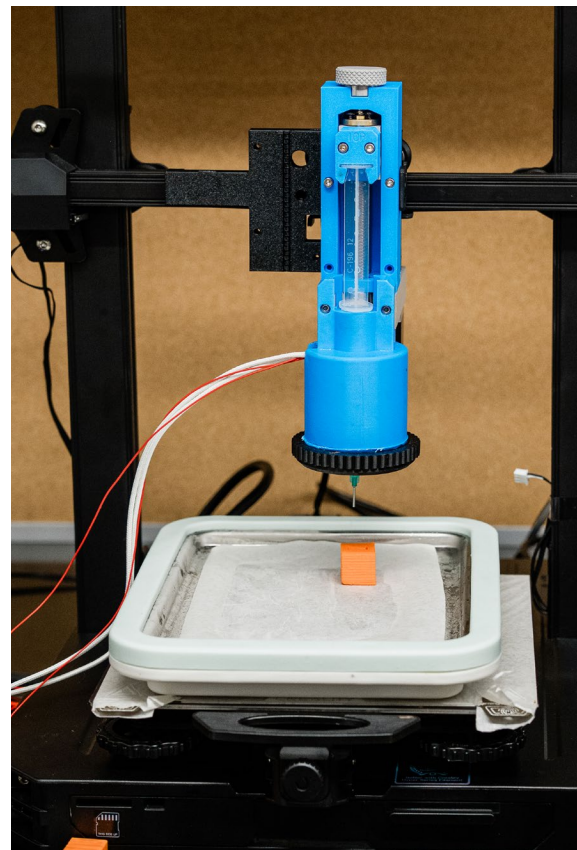
Engineering Dual-Degree Program

Students earn a BA in Applied Physics from Southwestern and a BS in Engineering from Washington University.



BAYLOR UNIVERSITY 4+1 FastBacc® Nursing Program

A streamlined five-year path to a nursing degree, starting at Southwestern and completing at Baylor.





PARIS 2024 PARIS 2024 PARIS 2024 PARIS 2024 PARIS 2024

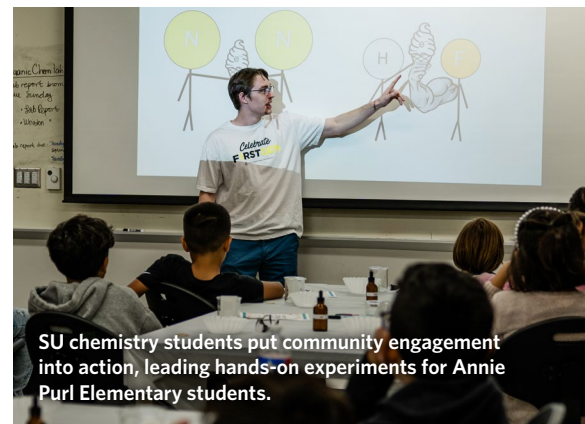
Eleven students spent four weeks in Paris studying sport, physiology, and culture during the 2024 Summer Olympic Games.



Kinesiology major Abi Walker '25 led fitness and memory care classes for seniors during her Grand Living internship, promoting wellness through movement.



Spurred by her affection for horses, Gabby Guinn '25 gives back to the community as an intern at the Ride On Center for Kids.



SU chemistry students put community engagement into action, leading hands-on experiments for Annie Purl Elementary students.



Sean Lade '25 spent the summer conducting cutting-edge research in Houston Methodist Hospital's Orthopedic Medicine department, studying how drugs affect cells at varying concentrations. His 10-week internship was part of a new partnership between Southwestern and Houston Methodist, which offers students interdisciplinary internships, clinical observerships, and research opportunities across the hospital's world-class facilities.



High-Impact Experiences

64% participate in an internship, field experience, student teaching, or a clinical placement

100% complete a capstone or similar project

55% held a formal leadership role in a student organization

1/3 of students collaborate with a faculty member on a research project

70+ countries where students can study abroad



Things You'll Only Find at SU

- A Seal You Shouldn't Step On**
 It's tradition: step on the seal before graduation, and you won't walk the stage. Students will detour around it—even during a crowd surge.
- Offerings to a Mysterious Sculpture**
 Before finals, students leave snacks for Monstrance for a Grey Horse, a hauntingly beautiful sculpture rumored to bring good luck.
- Pirate Bikes**
 Need to get across campus fast? Grab a Pirate Bike. No reservations. No app. Just ride.
- Captain's Sweet Surprise Wednesdays**
 On select Wednesdays throughout the year, "The Captain" pops up around campus with a surprise treat—because joy should be part of everyone's routine.
- Hundreds of Signatures in an Abandoned Tower**
 Before graduating, seniors climb the hidden staircase inside Cullen Tower to sign their names along the walls—a century-old rite of passage.
- A Bell that Only Rings Five Times a Year**
 At Commencement, the Rutersville College bell rings once for Southwestern and once for each of its four root colleges.

Leading by Green Example

Southwestern is committed to sustainable practices and eco-friendly policies.

- Southwestern is certified as an affiliate of the Bee Campus USA Program in recognition of the University's effort to conserve pollinators.
- Southwestern received Tree Campus Higher Education Recognition for its commitment to effective urban forest management.
- Pirate Dining received a Silver Sustainability Procurement Award for its leadership in implementing environmental sustainability in campus dining operations.

100%

One of the first universities in the nation to be a 100% wind-powered campus.

4

LEED-certified buildings (2 current and 2 coming soon).

1st

business in Georgetown to have greywater recycling.

#1

in Texas for the Top 50 Green Colleges (Princeton Review)

HISTORICAL HIGHLIGHT: In 2007, Southwestern became the first liberal arts university in Texas to sign the Tallories Declaration, an action plan for incorporating environmental sustainability into higher education.



As part of their senior capstone, Environmental Studies majors Logan Ferguson, Meredith Lannan, Isabella Moore, Sydney Strange, Blaine ten Wolde, Brianna Westmoreland, and Abby White collaborated with landscape architects on the SU 560 development. Their project, *From Blueprint to Greenprint*, offered sustainable design recommendations that will help guide the future of Southwestern's 560-acre expansion.

LEARN MORE:



Life Beyond the Syllabus

At Southwestern, adventure isn't an escape from learning—it's part of it.

Led by Brannndon Bargo, an Explorers Club member, host of Amazon's *Highpointers*, and Emmy-nominated filmmaker, our Outdoor Adventure program takes students to some of the most awe-inspiring places on earth, building confidence, friendships, and unforgettable memories along the way.

TOP TRIPS

- Summited Mount Kilimanjaro
- Hiked to the bottom of the Grand Canyon
- Spelunking Central Texas' many caves

DID YOU KNOW?

The Explorers Club is an elite international society dedicated to pushing the boundaries of human knowledge and discovery. Its members have included legends like Jane Goodall, Neil Armstrong, and Sir Edmund Hillary. Brannndon is one of them, and he's leading your next adventure.



AND BACK ON CAMPUS, THE ADVENTURE CONTINUES...

391

Intramural games played by 1,173 students across 257 teams—with 3,500 fans cheering from the stands.

35%

of students are athletes. Southwestern athletes compete in 20 NCAA Division III sports, and lead in the classroom, on the field, and across campus.

60+

student organizations. From scholastic societies to performance groups, robotics to cultural clubs, students find their people—and their purpose—through a vibrant mix of campus communities.

3,000+

pancakes. Finals week kicks off with Late-Night Breakfast, where faculty, staff, and even the President serve pancakes while students belt out karaoke and shake off stress.

OUTDOOR ADVENTURE BY THE NUMBERS

22

epic trips in one year

199

students challenged themselves in nature

Countless

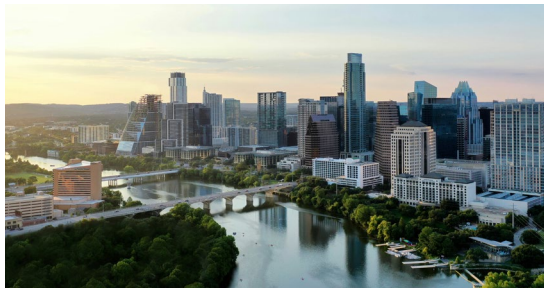
sunrises, campfires, and stories to tell





The Capital of Cool

At Southwestern, students don't have to choose between small-town charm and big-city energy—they get both. Located just 27 minutes from Austin, Southwestern offers access to one of the most innovative, creative, and opportunity-rich cities in the country, while still being part of a friendly, walkable college town.



WHY AUSTIN MATTERS

As the “Live Music Capital of the World” and a rising tech and innovation hub, Austin is home to:

- SXSW, ACL, and dozens of cultural festivals
- World-class museums, theaters, and BBQ joints
- Top employers like Dell, Tesla, Apple, and Oracle
- A booming startup scene and the headquarters of major nonprofits, creative agencies, and research centers
- Named one of the top five U.S. cities for recent college grads to start their careers

Whether students are catching a show at the Paramount, interning downtown, or networking at a startup mixer, Austin offers Southwestern students unmatched access to culture, creativity, and career connections.

Your Hometown Advantage



Georgetown delivers the charm, culture, and connection that make college life memorable:

- A thriving arts scene, indie shops, local cafés, and live music venues
- Miles of hike-and-bike trails along the scenic San Gabriel River
- Signature festivals like the Two Step Inn country music festival, just minutes from campus

PIRATE ADVENTURES: YOUR PASSPORT TO CENTRAL TEXAS



Looking to explore? Our Pirate Adventures Program gives students the chance to dive into the best of Austin and Central Texas. Recent outings included:

- Catching Formula 1 at Circuit of the Americas
- Touring art museums and underground comedy clubs
- Tasting your way through Austin's food truck scene
- Dancing under the stars at local music festivals

With more than 20 off-campus adventures a year, you'll never run out of ways to experience life beyond campus.

Excellence in Action

Southwestern students don't just rise to the occasion—they redefine it. These accomplished students exemplify the academic excellence, leadership, and real-world impact that distinguish the Southwestern experience.



Natasha Ndele '24
Pushing the boundaries of science and social awareness

Major: Biology

- Admission Ambassador, SGA leader, Black Student Union member, and President of Beta Beta Beta (biology honor society)
- King Creativity Scholar: *Framing Texas* quilt project honoring marginalized communities
- Capstone: “*Double Trouble: How Cancer-Associated Fibroblasts and Collagen 1 Influence Breast Cancer Progression*”
- Research Assistant in bladder cancer at Houston Methodist Hospital — named **Intern of the Year**
- Population Health Intern at Keck Graduate Institute
- **Current Role:** Senior Research Technician at PPD, the clinical research division of Thermo Fisher Scientific, the world leader in clinical research and patient-centered drug development



Fernando Cruz-Rivera '26
Bridging theory and policy to drive systemic change

Majors: Political Science and Philosophy

- First-generation college student
- Legislative Intern, Texas State Senator Sarah Eckhardt
- Congressional Intern, U.S. Representative Lloyd Doggett
- Co-author, forthcoming MAP & Bloomsbury publication on structural injustice
- Participant, HACU ¡Adelante! Leadership Institute
- Leadership roles in Latinos Unidos, Kappa Sigma, SU History Union, and Student Government Association
- **Future Goal:** Federal clerkship and legal career focused on public service



Dugan Sexton '25
From the football field to the courtroom, leading every step of the way

Major: Business

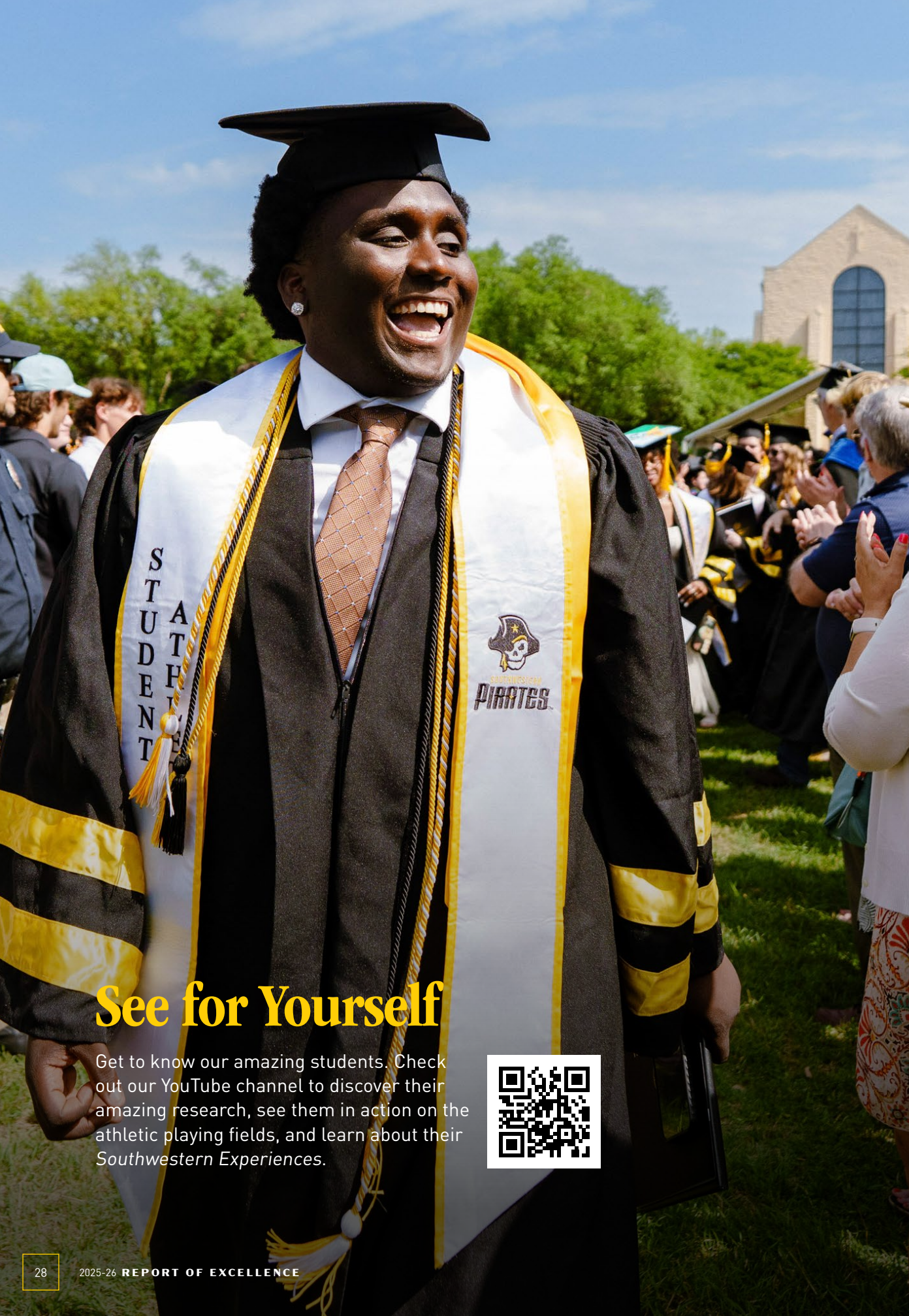
- Captain, Southwestern Football Team
- Leadership Roles in the Business Club, Student-Athlete Advisory Committee, and Phi Delta Theta
- Member, Omicron Delta Kappa and Sigma Delta Pi honor societies
- Study Abroad: Granada, Spain
- Sales Development Intern, Interstate Advanced Materials
- **Current Role:** First-year Law Student at Gonzaga University



Abigail Bensman '25
From Georgetown to Broadway

Major: Business with Theatre Minor

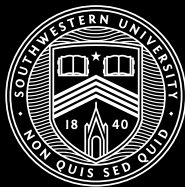
- Cast as “Brenda” in the national tour of the Tony Award-winning musical *Hairspray* between sophomore and junior years
- Starred in SU productions like *Sweeney Todd* and *Ride the Cyclone*
- Member of Delta Delta Delta
- Built a 32,000+ follower TikTok community offering behind-the-scenes insight into touring life
- Balanced her Broadway dream with academics, completing her SU education and a year of Broadway experience in just four years
- **Current Path:** Balancing a part-time marketing position with a growing national performance career



See for Yourself

Get to know our amazing students. Check out our YouTube channel to discover their amazing research, see them in action on the athletic playing fields, and learn about their *Southwestern Experiences*.





SOUTHWESTERN UNIVERSITY



GEORGETOWN, TEXAS