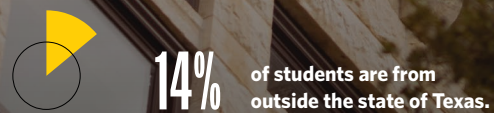




SOUTHWESTERN UNIVERSITY

2024-25 REPORT OF EXCELLENCE

SOUTHWESTERN UNIVERSITY IS THE MOST SELECTIVE, DIVERSE, UNDERGRADUATE, LIBERAL ARTS INSTITUTION IN TEXAS.



Founded in 1840, Southwestern offers a welcoming and inclusive living and learning environment that supports and nurtures different perspectives, values, and experiences. Our top-ranked integrated arts and sciences curriculum develops students' ability to make connections across different ways of knowing and to create innovative solutions to complex problems. Students engage in dynamic classroom discussions and real-world learning experiences that empower them to think in broader, more collaborative, and original ways.

#1 THEN.



1840

1ST

institution of higher learning in Texas and the Southwest.

#1 NOW.



2024

#1

in Texas for Economic Diversity
(*The New York Times*)

Career Services in Texas
(*The Princeton Review*)

Best Private School in Texas for Making an Impact
(*The Princeton Review*)

Hispanic-Serving Institution on the Top 100 Liberal Arts Institutions list
(*U.S. News & World Report*)



UNITING TRADITION AND INNOVATION

As we celebrate our 185th year, Southwestern University stands at a pivotal moment of growth and innovation. Our commitment to excellence is reflected in our strategic initiatives and building projects, all aimed at enhancing the student experience and fostering a vibrant community.

\$120M

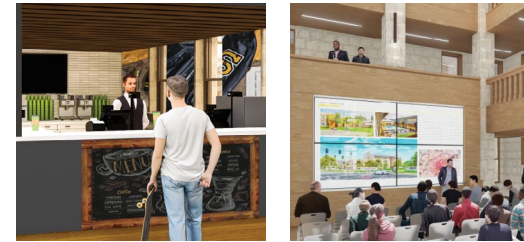
in building projects, including new residence halls and athletic complex

#1

located in Georgetown, Texas, the fastest-growing city in America

BUILDING PROJECTS

Look around the Southwestern campus, and you'll see building activity everywhere, with more than \$120 million worth of projects underway. This includes two new residence halls and an athletics complex that will bring football back to campus for the first time in 75 years. We also welcome our new students to the fastest-growing city in America, surrounded by companies like Apple, Google, Samsung, Dell, and Tesla, making Southwestern a vital component in a dynamic marketplace that is redefining the liberal arts for the 21st century.



MOOD-BRIDWELL RENOVATION:

Blends 21st-century technology with historical features, including community areas, a performance space, electronic classrooms, and a coffeehouse.



MIXED-USE RESIDENCE HALLS:

Ready by 2026, these halls will feature classrooms, study rooms, workout rooms, lounges, and fitness spaces for yoga and pilates, designed to LEED Gold standards.



WELCOME CENTER:

Located next to the new first-year residence hall, it will house Admission and Financial Aid offices, an art gallery, and a film theater, creating a vibrant hub for incoming students and visitors.



MULTI-PURPOSE SPORTS COMPLEX:

Built on the current football practice field, this complex will feature grandstands, a stadium press box, a synthetic turf playing surface, scoreboards, a visiting team locker room, ticket windows, and spectator seating for track & field. It will serve various sports and large university events, such as Commencement, enhancing community vibrancy and cohesion.



THE 98TH MERIDIAN
CONCEPT AT
SOUTHWESTERN
UNIVERSITY

Southwestern University is developing the 560 acres adjacent to our campus to create a distinctive, one-of-a-kind liberal arts community that is unparalleled. This ambitious development project, known as the 98th Meridian Concept at Southwestern University, is inspired by the unique environments, cultures, and traditions of Central Texas and aims to set a national standard for innovative development.

The 98th Meridian Concept at Southwestern University is named for our distinctive location on the 98th Meridian, the great American longitudinal point of

convergence. Southwestern University is where the eastern and western and northern and southern quadrants of the nation meet, combining climates, topographies, and cultures into something new that draws together multiple traditions to produce something innovative. This is where the future of community, the arts, and human-centered growth will be written.

The 98th Meridian Concept at Southwestern University is a physical embodiment of the university's values informed by our strong sense of place. Our vision is informed by our commitment

50
ACRES
 Size of Phase 1
 Development

to open exchange, genuine connection, human development, and creativity through art, design, programming and hands-on teaching and learning.

The 98th Meridian Concept at Southwestern University both enhances our community's quality of life and is built around experiential and lifelong learning opportunities for our students, faculty, staff, and neighbors. It features the arts, both fine, music, and architectural, along with environmentally and economically sustainable housing, retail, industry, and green spaces. This project solidifies Southwestern's esteemed presence among national liberal arts institutions and meets the unceasing urbanization of Central Texas with strong values to guide our actions.

In our 185th year, the 98th Meridian Concept for this future development reflects our longstanding dedication to innovation and excellence. This project symbolizes the merging of our rich history with a visionary future, uniting tradition and progress to create a transformative impact on our community and beyond. Southwestern University continues to lead with vision and purpose, embodying the spirit of our 185th year and the 98th Meridian Concept in all our endeavors.



1459

Student Body

115

Full-Time Faculty

11:1

Student-Faculty Ratio

302

Total Graduates in the Class of 2024

Southwestern students are careful not to walk across the seal! Legend has it that those who dare to cross the seal before graduation will not cross the stage. Even when the sidewalk is crowded, students still make a point to give the seal a wide berth.



Historical Highlights

Three of the first five **Rhodes Scholars** in Texas graduated from Southwestern.

Southwestern University is the birthplace of the National Honor Society Alpha Chi.



The **Phi Beta Kappa Society** is the nation's oldest honorary society, with chapters at 293 of the foremost institutions of higher education across the country.



Student Initiates



Faculty, Staff, & Trustee Members



Honorary & Alumni Members

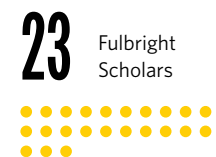
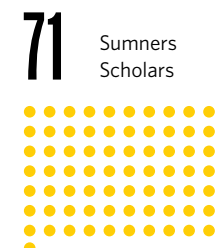


Chapters in Texas

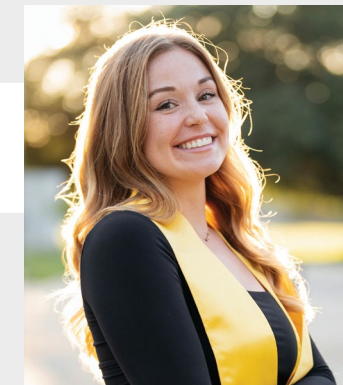
NOTABLE STUDENT ACCOMPLISHMENTS

STUDENT SCHOLARS

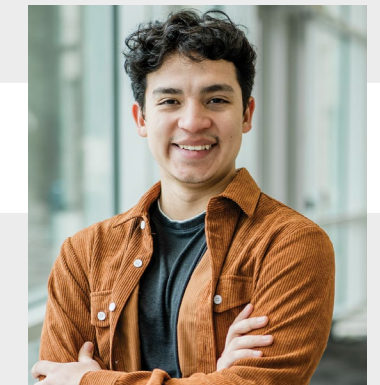
Southwestern students earned an impressive record of national recognition for their academic achievements earning prestigious honors and awards.



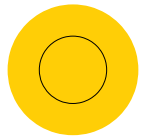
For the first time in nearly three decades, a Southwestern University student, **Brian Armijo '25**, has earned the Barry Goldwater Scholarship.



Sierra Rupp '23, a political science senior, participated in the U.S. Department of State's Critical Language Scholarship Program to study Russian during summer 2024.

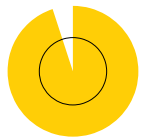


Alejandro Medina '24 has been named one of the four recipients of the 2023-2024 Outstanding Undergraduate Researcher Award by the Computing Research Association.



100%

medical school acceptance rate for the Class of 2023—the highest in the nation.



95%

of students are employed or in graduate school within 10 months of graduation. We will achieve 100% within the next four years.



TOP 5 MAJORS

- + Business
- + Psychology
- + Biology
- + Kinesiology
- + Communication Studies

STUDENT SUCCESS



SU students work with faculty researchers on projects ranging from the 3D printing of human organs to building rockets to cancer research.



Students in Southwestern's Financial Analyst Program are responsible for managing over \$1 million of the University's endowment.



According to the Fiske Guide to Colleges, students of the Sarofim School of Fine Arts are notable for producing graduate-level creative work.

GRADUATE & PROFESSIONAL SCHOOLS ATTENDED BY SOUTHWESTERN ALUMNI

LAW SCHOOLS

- + Duke University
- + Emory University
- + Northeastern University
- + University of Southern California
- + University of Texas

MEDICAL SCHOOLS

- + University of Pennsylvania
- + University of Texas Health Science Center
- + University of Texas Medical Branch
- + University of Texas Southwestern Medical Center
- + Washington University

GRADUATE SCHOOLS

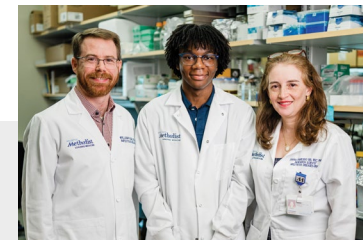
- + Harvard University
- + University of Pennsylvania
- + Dartmouth College
- + Rice University
- + University of California, Berkeley
- + University of Chicago

PATHWAYS TO POST-GRADUATE EDUCATION/CAREERS

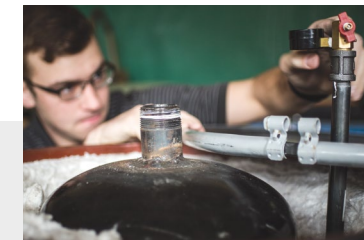
Southwestern University supports seamless transitions to post-graduate education and careers through strategic partnerships with Houston Methodist, Rice University, and Washington University.



Southwestern-Rice MAcc Partnership provides seamless transition from SU to Rice's accounting program offering, application fee waivers, scholarships, and early recruitment for Big Four accounting internships.



Houston Methodist Partnership: marketing competitions, research internships, interdisciplinary internships, and observerships.



Dual-Degree Engineering Program with Washington University allows students to earn both liberal arts and engineering degrees.

15 Number of students who have completed internships with Houston Methodist

16 Number of students who have completed the SU-Rice MAcc program and are employed by accounting firms



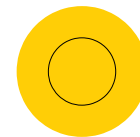
HIGH-IMPACT EXPERIENCES



73% participate in an internship, field experience, student teaching, or a clinical placement



55% hold a formal leadership role in a student organization



100% complete a capstone or similar project



1/3 of students collaborate with a faculty member on a research project



70+ countries where students can study abroad

TRADITIONS

Southwestern has created many beloved traditions throughout its 185-year history.

Historical Highlight

Southwestern hosted the **first collegiate Homecoming on record** on April 21, 1909.

>24,000

The number of alumni, students, parents, and friends who have attended Homecoming in the last 15 years.



5

The number of times the Rutgersville College bell rings during each Commencement Convocation, representing Southwestern and its four root colleges.



109

The number of years Southwestern has held its Candlelight Services dating back to December 6, 1915.



For more than a century, graduating seniors have ascended the hidden staircase within the Cullen Tower to sign their names along its walls.



Superstitious students make offerings of food to "Monstrance for a Grey Horse," a sculpture by artist James Acord, before finals for good luck.



The President, administrators, faculty, and staff serve Late-Night Breakfast to kickoff finals week.

 *Historical Highlight*

In 2007, Southwestern became the second university in Texas to sign the **Taillores Declaration**, an action plan for incorporating environmental sustainability into higher education.



With the support of an SU alumnus and local honey producer, Layla Hoffen '26 created BEE-Co, one of the most unique student organizations at Southwestern.



SUSTAINABILITY

Southwestern is committed to sustainable practices and eco-friendly policies.



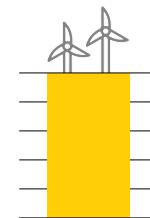
Southwestern is certified as an affiliate of the **Bee Campus USA Program** in recognition of the University's effort to conserve pollinators.



Southwestern earned a **Stars GOLD rating** in recognition of its sustainability achievements from the Association for the Advancement of Sustainability in Higher Education.



Southwestern received **Tree Campus Higher Education Recognition** for its commitment to effective urban forest management.



100%

one of the first universities in the nation to be a 100% wind-powered campus.



4

LEED-certified buildings (2 current and 2 coming soon).



1ST

Business in Georgetown to have greywater recycling.



Newly renovated greenhouse for student use.



CAMPUS LIFE

Located in Georgetown, Texas, Southwestern University provides the best of both worlds: a historic campus in a picturesque town with convenient access to the culture, food, and music scenes of America's coolest city, Austin.



GEORGETOWN




On Wednesdays, we enjoy a Sweet Surprise! The Captain brings a surprise treat to the entire campus, spreading joy and deliciousness weekly.



Graduating Seniors are able to dance the night away at a Mardi Gras Ball filled with masks, king cake, and more! There's even a Krewe Court.



Late to class? Starving with only 15 minutes left for lunch? Never fear, Pirate Bikes to the rescue! Our campus bike share program provides a quick means for students, faculty, and staff to get from one place to another.

60+ 

The number of student organizations on campus, which range from scholastic societies to social justice groups. Student organizations include Pirates for Pride, Fellowship of Christian Athletes, The Physics Club, Korouva Milkbar, Mask & Wig, Student Philanthropy Council, Hispanic and Latinx Organization, E.M.P.I.R.E., Robotics Club, Chess Club, *The Megaphone*, and many more.



Historical Highlight

In 1942, Southwestern purchased a dairy farm—its **125 Jersey cows** supplied milk to the campus community.

700 

The number of acres that make up the Southwestern campus, making it bigger than Disneyland and the University of Texas at Austin.

During World War II, Southwestern's enrollment more than doubled after the establishment of a **V-12 Navy College Training Program** on campus.

LIFE BEYOND THE SYLLABUS

Southwestern Outdoor Adventure provides opportunities to explore nature and develop outdoor skills in a fun and safe environment. You will have the chance to hike, backpack, camp, rock climb, cave, mountain bike, kayak, and paddle board throughout Texas and beyond. The SU Outdoor Adventure Program offers day trips as well as multi-day adventures for the Fall and Spring semesters.



CONQUERING MOUNT KILIMANJARO

Southwestern prides itself on offering once-in-a-lifetime and transformative experiences for students. Recently, a group of 12 adventurous students journeyed to the summit of Mount Kilimanjaro and immersed themselves in the vibrant culture of Tanzania. Every moment was filled with excitement and discovery, from a walking safari to heartfelt connections with locals.



Led by Assistant Director of Outdoor Recreation **Branddon Bargo**, host of *The Highpointers* on PBS and Amazon Prime.

12

The number of students who successfully summited Mount Kilimanjaro, Africa's tallest peak.



Southwestern students have the opportunity to participate in **over 10 outdoor trips** each academic year.

107

The number of students who embarked on at least one outdoor adventure during the 2023-24 academic year.

ATHLETICS

Our student-athletes excel both on and off the field.

Historical Highlight

On November 5, 1908, Southwestern University's football team **defeated the Texas Longhorns** 11-9.

62

The number of conference players of the year

46

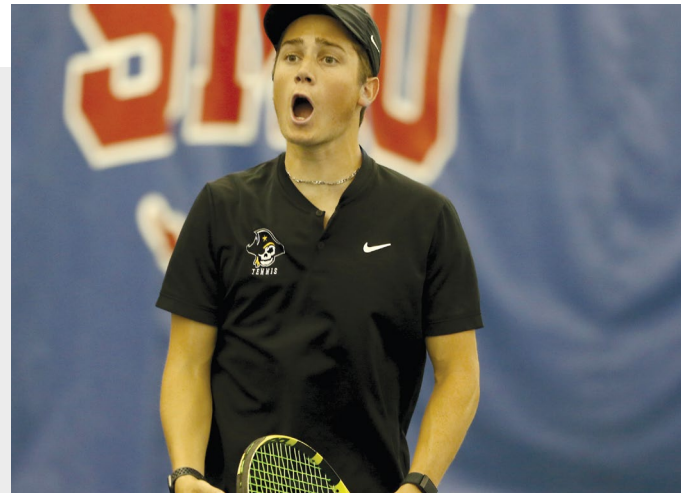
The number of NCAA appearances

80

The number of All-Americans among all sports

39

The number of SU athletes who went on to play in the pros



Oscar Roy '25 became the first student-athlete in men's tennis program history to earn All-American status as both a singles and doubles player. Roy finished as the number 20th ranked singles player in Division III, making the NCAA tournament and finishing with a 15-5 record. He was named Dr. Tex Kassen Male Athlete of the Year and the SCAC Player of the year.



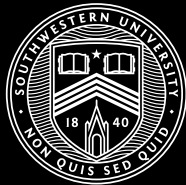
In 2024, **Arden Neff '25** won her third consecutive SCAC gold medal in the women's track 400 M hurdles. She also broke three school records on the year.



SEE FOR YOURSELF.

Get to know our amazing students. Check out our YouTube channel to discover their amazing research, see them in action on the athletic playing fields, and learn about their *Southwestern Experiences*.





SOUTHWESTERN UNIVERSITY



GEORGETOWN, TEXAS